

WELD-2130 - SMAW II

Instructor: Mr. Jacob A. Gutierrez **Office Hours:** Tuesdays 11:20a-12:20p or by appointment
Email: jgutie01@unm.edu **Meeting Place and Time:** TH 8:00am-11:20am
Office: Room 117 UNM-Valencia Classroom 117

COURSE DESCRIPTION Covers topics in shielded metal-arc (SMAW) safety, basic fabrication and repair.

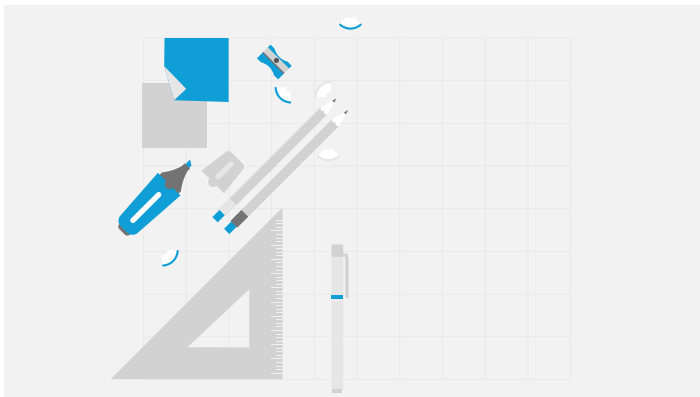
COURSE STUDENT LEARNING OUTCOMES: 1. Demonstrate the ability to safely operate the Shielded Metal Arc Welding equipment.

2. Understand the welding theory and proper application of Shielded Metal Arc Welding
3. Demonstrate the ability to weld low carbon steel, using Shielded Metal Arc Welding equipment.
4. Setting up and breaking down welders for SMAW
5. Trouble shoot Weld Defects and discontinuities.

TEXTBOOK (S): N/A

ATTENDANCE POLICY: Attendance is required and part of your final grade, there will be a sign in sheet on the front table daily, it is your responsibility to sign in. If you leave class early or arrive to class late, it will be reflected in your attendance score (unless this is due to school bus transportation issues). Students with excessive absences (more than 3 absences) will be dropped from the course. If you are not in class by the start time as designated on this syllabus, you are late. Three tardies equals one unexcused absence.

Excused absences will require a note.





GRADING POLICY:

Grading Scale:

970-1000 A+	930-969 A	900-929 A-
870-899 B+	830-869 B	800-829 B-
770-799 C+	730-769 C	700-729 C-
670-699 D+	630-669 D	600-629 D-
599-0 F		

%

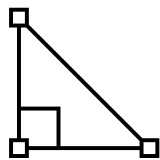
Attendance for Lab	10%
Welding Performance Tests	65%
Final Exam	25%
Total	100%

COURSE OUTLINE:

In Class Projects are your main grades for this class. We will have several projects throughout the semester which I will lecture about, do a demonstration, and then you are expected to complete the project. Projects and welds will be held to AWS standards where Weld Defects and Weld Discontinuities will affect your grades.

Late Work: In general, I do not accept late work. All the due dates for assignments are listed clearly in Canvas so make sure you keep track of due dates. If you have extenuating circumstances such as a death in the family, severe sickness, or a major accident, extensions may be granted. It is the student's responsibility to notify the instructor as soon as possible when an extension is needed.

Extra Credit statement: You can redo 1 assignment for a better grade.



The following schedule is subject to change should the instructor deem it necessary.

Date	Topic	Notes
Week 1	Course Introduction Safety	
Week 2	Safety, Welding Lecture, Padding Exercise	
Week 3	Padding Cont. Iron Cross Lecture	Turn in Padding and Grading
Week 4	Iron Cross Cont.	Turn in Iron Cross
Week 5	BLT Lecture & Welding	Lecture on 1F BLT
Week 6	BLT Lecture and Welding	Lecture on 2F BLT
Week 7	6010 padding	6010 lecture
Week 8	Final Exam	

Credit-hour statement: This is a three credit-hour course. Class meets for 2 3.25-hour sessions of direct instruction for eight weeks during the Spring 2026 semester.

Academic Integrity and/or Plagiarism Policy:

Having academic integrity is paramount to your success in any class. Plagiarism or cheating is not tolerated. Any instance of this will result in a grade of zero for that assignment. Here is the link to the UNM Academic Dishonesty Policy: <https://policy.unm.edu/regents-policies/section-4/4-8.html>. The policy states: *Each student is expected to maintain the highest standards of honesty and integrity in academic and professional matters. The University reserves the right to take disciplinary action, up to and including dismissal, against any student who is found guilty of academic dishonesty or who otherwise fails to meet the expected standards. Any student judged to have engaged in academic dishonesty in course work may receive a reduced or failing grade for the work in question and/or for the course.*

Academic Dishonesty is defined as:

"Academic dishonesty" includes, but is not limited to, dishonesty in quizzes, tests, or assignments; claiming credit for work not done or done by others; hindering the academic work of other students; misrepresenting academic or professional qualifications within or without the University; and nondisclosure or misrepresentation in filling out applications or other University records.

ELECTRONIC DEVICE USAGE: Phone usage is not allowed in class. Phones must be on silent. If you are caught on your phone without permission, you will lose your participation point for the day. The use of cell phones while in the lab for testing is strictly prohibited. They must be silenced and placed in your backpack or on the instructor desk during testing.

Accommodations: UNM is committed to providing equitable access to learning opportunities for students with documented disabilities. As your instructor, it is my objective to facilitate an inclusive classroom setting, in which students have full access and opportunity to participate. To engage in a confidential conversation about the process for requesting reasonable accommodations for this class and/or program, please contact the [UNM-Valencia Equal Access Services](#) (Sarah Clawson, Coordinator), at (505) 925-8840 or by email at sjclawson@unm.edu. Or the UNM-Albuquerque Accessibility Resource Center (<https://arc.unm.edu/>) at arcsrvs@unm.edu or by phone at 505-277-3506.

Title IX: The University of New Mexico and its faculty are committed to supporting our students and providing an environment that is free of bias, discrimination, and harassment. The University's programs and activities, including the classroom, should always provide a space of mutual respect, kindness, and support without fear of harassment, violence, or discrimination. Discrimination on the basis of sex includes discrimination on the basis of assigned sex at birth, sex characteristics, pregnancy and pregnancy related conditions, sexual orientation and gender identity. If you have encountered any form of discrimination on the basis of sex, including sexual harassment, sexual assault, stalking, domestic or dating violence, we encourage you to report this to the University. You can access the confidential resources available on campus at the LoboRESPECT Advocacy Center (<https://loborespect.unm.edu>), the Women's Resource Center (<https://women.unm.edu>), and the LGBTQ Resource Center (<https://lgbtqrc.unm.edu>). If you speak with an instructor (including a TA or a GA) regarding an incident connected to discrimination on the basis of sex, they must notify UNM's Title IX Coordinator that you shared an experience relating to Title IX, even if you ask the instructor not to disclose it. The Title IX Coordinator is available to assist you in understanding your options and in connecting you with all possible resources on and off campus. For more information on the campus policy regarding sexual misconduct and reporting, please see <https://policy.unm.edu/university-policies/2000/2740.html> and CEEO's [website](#)

If you are pregnant or experiencing a pregnancy-related condition, you may contact UNM's Office of Compliance, Ethics, and Equal Opportunity at ceeo@unm.edu. The CEEO staff will provide you with access to available resources and supportive measures and assist you in understanding your rights.

Computer Lab Responsibility: Please be advised that use of the computer labs on UNM properties is governed by "Policy 2500: Acceptable Computer Use" which can be found at <http://policy.unm.edu/university-policies/2000/2500.html>. Food and drink are also prohibited in any computer labs on campus. Anyone violating these policies is subject to possible suspension and loss of computer lab privileges.

UNM Email/ Canvas:

Beginning Fall 2015 semester, all UNM-Valencia students will be required to have a UNM Net ID which can be created by going to: <http://it.unm.edu/accounts/>. UNM Net ID will give you access to the computer labs on campus and UNM Email. Make sure to update this information as your method of contact under personal information on Lobo Web. This is a web-enhanced course. This means that you will need to access Canvas on a regular basis to complete assignments.

