

western civilization I

HIST 1150

Section 501

CRN 56374

3 credit hours

Tues/Thurs:

10:30am-11:45am

UNM-Valencia
Workforce
Training
Center (WTC)
Room 1108



Akhnaten, Nefertiti and family, circa 1350 BCE, 18th Dynasty, Ancient Egypt



Nefertiti

This course is a chronological treatment of the history of the western world from ancient times to the early modern era. The elements of this course are designed to inform students on the major events and trends that are essential in the understanding of the development of western civilization within the context of world societies. Selective attention will be given to "non-western" civilizations that impact and influence the development of "western" civilization.

Dr. Laura Musselwhite
Dean of Instruction (and proud to be your instructor this semester!)

I am at the WTC all day Tuesday and Thursday (Administrative Suite 1201B), and at the Tomé campus all other days (Arts and Sciences 114).

lmusselwhite@unm.edu
505.925.8601

Course Learning Outcomes

- 1) Students will be able to explain in their work how humans in the past shaped their own unique historical moments and were shaped by those moments, and how those cultures changed over the course of the centuries for the history of the western world from ancient times to the early modern era.
- 2) Students will distinguish between primary and secondary sources, identify and evaluate evidence and empathize with people in their historical context.
- 3) Students will summarize and appraise different historical interpretations and evidence in order to construct past events.
- 4) Students will identify historical arguments in a variety of sources and explain how they were constructed, evaluating credibility, perspective, and relevance.
- 5) Students will create well-supported historical arguments and narratives that demonstrate an awareness of audience.
- 6) Students will apply historical knowledge and historical thinking “in order to infer what drives and motivates human behavior in both past and present.”

Your tests and papers are designed with these in mind. You will strive to synthesize and analyze the material, not just spit it out on a test. My personal goal is for you to understand and recognize the importance of some area of history that you had never considered before.

The specific content goals for HIST1150 include the following:

- 1) The student will be able to analyze the progression of prehistoric societies to a more complex system of societies and governments.
- 2) The student will understand the emergence of Sumerian and Egyptian civilizations in the Fertile Crescent and be able to compare and contrast these two ancient cultures.
- 3) The student will be able to discern and describe the Classical cultures of Greece and Rome and why their influence continues to shape western political and philosophical thought and artistic conventions.
- 4) The student will be able to outline the ways in which the Medieval period represents the breakdown of the Roman Empire, the impetus for the rise of European nation states, and the development of the Christian Church as a binding agent for the West.
- 5) The student will be able to describe the impact of the birth of Islam upon the world, and analyze how the religion affected the future of the region and beyond.
- 6) The student will be able to indicate the ways in which the Renaissance gives re-birth to Classical culture through humanism whereby art, philosophy, and politics are transformed from a predominantly clerical society to an increasingly secular one.
- 7) The student will be able to analyze how the European age of exploration, including the impact of the Columbian Exchange, trans-Atlantic Slavery, triangular trade and the creation of the modern, integrated Atlantic economy, impacted the modern development of the region.
- 8) The student will be able to describe how the Protestant Reformation shattered the Christian unity of Europe and how the Catholic Counter-Reformation led to a century of religious wars.

<p>important university stuff to know</p> <p>UNM sets policies designed to provide services and help with your success. Please take a look at these.</p>	Academic Integrity	Equal Opportunity and Non-Discrimination	Disability and Accommodations
	<p>Having academic integrity is paramount to your success in any class. Plagiarism or cheating is not tolerated. Any instance of this will result in a grade of zero for that assignment. Here is the link to the UNM Academic Dishonesty Policy: https://policy.unm.edu/regents-policies/section-4/4-8.html. The policy states:</p> <p><i>Each student is expected to maintain the highest standards of honesty and integrity in academic and professional matters. The University reserves the right to take disciplinary action, up to and including dismissal, against any student who is found guilty of academic dishonesty or who otherwise fails to meet the expected standards. Any student judged to have engaged in academic dishonesty in course work may receive a reduced or failing grade for the work in question and/or for the course.</i></p>	<p>In an effort to meet obligations until Title IX, UNM faculty are considered “responsible employees” by the Department of Education (http://www2.ed.gov/about/offices/list/ocr/docs/qa-201404-title-ix.pdf). This designation requires that any report of gender discrimination which includes sexual harassment, sexual misconduct and sexual violence made to a faculty member must be reported to the Title IX Coordinator at the Compliance and Equal Opportunity Office (http://oeo.unm.edu). For more information on the campus policy regarding sexual misconduct, see https://policy.unm.edu/university-policies/2000/2740.html.</p>	<p>If you have a documented disability, the Equal Access Services office will provide me with a letter outlining your accommodations. I will then discuss the accommodations with you to determine the best learning environment. If you feel that you need accommodations, but have not documented your disability, please contact Cheryl Dilger, the coordinator for Equal Access Services at 925-8910 or cdilger@unm.edu.</p>
	<p>Academic Dishonesty is defined as:</p> <p><i>"Academic dishonesty" includes, but is not limited to, dishonesty in quizzes, tests, or assignments; claiming credit for work not done or done by others; hindering the academic work of other students; misrepresenting academic or professional qualifications within or without the University; and nondisclosure or misrepresentation in filling out applications or other University records.</i></p>	UNM-Valencia Resources	
		<p>Please see these campus resources: https://valencia.unm.edu/students/student-services.html</p> <p>Also, there are opportunities available through the PASOS Resource Hub: https://valencia.unm.edu/campus-resources/pasos/pasos-resource-center/index.html</p>	

Course details

Readings

There will be several readings that I will distribute to you in class, either on paper or electronically on Blackboard Learn. Also, you have access to an open source electronic textbook here: <https://oer.galileo.usg.edu/history-textbooks/3/>. Another text option is here: <https://oer.galileo.usg.edu/history-textbooks/2/>.

***You do not have to purchase a text for this course.**

Make-ups

Please make separate arrangements with me in the event you must miss an exam and need a make-up. The make-up must be taken within one week of the missed exam.

Attendance

Regular participation, attendance, and the turning in of assignments are expected. 5% of your total grade is based on participation. If you are absent for the first two total weeks of class, you will be disenrolled/dropped from class. After that point in the semester, **you will not be dropped for excessive absences**; therefore, **do not assume you will be dropped** if you stop attending after the first two weeks. You must communicate with me if something is preventing you from attending. For the total semester, you can have three “free” absences. After that, you start to lose ½ point from your grade for each absence. As indicated above, you have 5 points total (5% out of 100%) for attendance.



Book of Hours, June



Book of Hours, February

More course details

Reaction Paper

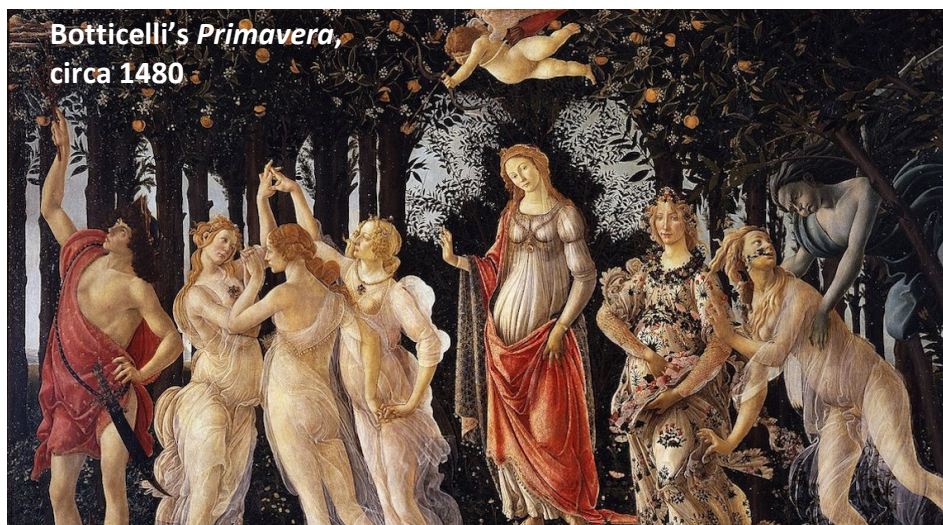
This paper is to be **three pages** in length (approximately 1000 words, double spaced) and is due **Tues., Feb. 8**. You will choose a focused topic on the *Hammurabi* text from a list on the guide sheet that I will provide. You must use material from the text to support your thesis, and cite it appropriately. We will discuss how to do this in class. No matter what topic you choose, your paper should address historical significance – how does what you are discussing reflect upon their culture and era?

Historical analyses

These are **two-page** (approximately 700 words, double spaced) papers that will reflect your views on an historical topic. The first paper will cover a topic from the first half of class, and the second paper will cover a topic from the second half of class. The first analysis is due **Tues., March 8**, and the second analysis is due **Thurs., April 28**. We will go over possible topics and possible ways to organize your analyses in class. These short papers are designed to help you look at historical context, why things happen, and why those things might be significant to us today. If you would rather do some type of interactive project (PowerPoint, Canva, video) instead of a written paper for the analyses, that is fine.

Exams

There will be three exams this semester, including a non-comprehensive final. All exams are part short answer, part essay, and will be based on class lecture, discussion, and the readings. **I will provide blue exam books for you on test days - these are what you will use for the exams.** The exams will count the following percentages toward your final grade: exam 1 -- 20%; exam 2 -- 20%; final -- 20%. 5% of your grade will come from class participation. The remaining 35% of your grade will come from three additional assignments: two historical analyses (10% each), and a reaction paper based on *Hammurabi's Code* (15%).



Grading Scale:

A+	(97-100)
A	(93-96)
A-	(90-92)
B+	(87-89)
B	(83-86)
B-	(80-82)
C+	(77-79)
C	(73-76)
C-	(70-72)
D+	(67-69)
D	(63-66)
D-	(60-62)
F	(0-59)

Reaction Paper	15%	Due February 10
Historical Analysis 1	10%	Due March 8
Historical Analysis 2	10%	Due April 28
Exam 1	20%	March 1
Exam 2	20%	April 7
Final Exam	20%	May 10
Attendance/Participation	<u>5%</u>	
Total	100%	

Class Outline

Tues., Jan. 18 – Prehistory

Thurs., Jan. 20 – Mesopotamia

Tues., Jan. 25 – no class. Dr. Musselwhite in Chancellor search meetings.

Thurs., Jan. 27 -- Mesopotamia II and Egypt. Discussion of *Hammurabi's Code*.

Tues., Feb. 1 – Egypt II

Thurs., Feb. 3 – Egypt III

Tues., Feb. 8 – Greece

Thurs., Feb. 10 – Greece II. *Hammurabi's Code* reaction paper due.

Tues., Feb. 15 – Greece III and Hellenistic Period

Thurs., Feb. 17 – Rome

Tues., Feb. 22 – Rome II

Thurs., Feb. 24 – Rome III

Tues., Mar. 1 – Exam 1

Thurs., March 3 – Byzantium and Islam

Tues., March 8 – Early Medieval Period. First historical analysis due.

Thurs., March 10 – no class

Tues., March 15 and Thurs., March 17 – Spring Break – no class

Tues., March 22 – possibly no class, Dr. Musselwhite in Chancellor search meetings

Thurs., March 24 – possibly no class, Dr. Musselwhite in Chancellor search meetings

Tues., March 29 -- High Medieval Period

Thurs., March 31 – High Medieval Period II

Tues., April 5 – Late Medieval Period

Thurs., April 7 – Exam 2

Tues., April 12 – Renaissance

Thurs., April 14 – Renaissance II

Tues., April 19 – Renaissance III

Thurs., April 21 – New World Exploration

Tues., April 26 – Reformation

Thurs., April 28 – Reformation II. Second historical analysis due.

Tues., May 3 – Reformation III

Thurs., May 5 – Early Modern Politics, last day of class

Tues., May 10 – Final Exam (10:30am-12:30pm)



Workforce Training Center – 1020 Huning Ranch Loop, Los Lunas, 87031

COVID-19 Information

UNM requires COVID-19 vaccination and a booster for all students, faculty, and staff, or an approved exemption (see: [UNM Administrative Mandate on Required Vaccinations](#)). Proof of vaccination and booster, or a [medical, religious, or online remote exemption](#), must be uploaded to the [UNM vaccination verification site](#). Failure to provide this proof may result in a registration hold and/or disenrollment for students and disciplinary action for UNM employees.

Booster Requirement: Individuals who received their second dose of a Pfizer or Moderna vaccine on or before June 15, 2021, or their single dose of a Johnson & Johnson vaccine on or before October 15, 2021, *must provide documentation of receipt of a booster dose no later than January 17, 2022.*

Individuals who received their second dose of a Pfizer or Moderna vaccine after June 15, 2021 or who received their single dose of Johnson & Johnson after November 15, 2021 *must provide documentation of receipt of a booster within four weeks of eligibility*, according to the criteria provided by the FDA (6 months after completing an initial two-dose Moderna vaccine, 5 months after completing the Pfizer sequence, and 2 months after receiving a one-dose Johnson and Johnson vaccine).

Exemptions: Individuals who cannot yet obtain a booster due to illness should request a [medical, religious, or online remote exemption](#) (which may have an end date) and upload this to the [vaccination verification site](#).

Medical and religious exemptions validated in Fall 2021 (see your email confirmation) are also valid for Spring 2022 *unless an end date was specified in the granting of a limited medical exemption*. Students must apply for a remote online exemption every semester.

All students, staff, and instructors are required to wear face masks in indoor classes, labs, studios and meetings on UNM campuses, see the [masking requirement](#). Students who do not wear a mask indoors on UNM campuses can expect to be asked to leave the classroom and to be dropped from a class if failure to wear a mask occurs more than once in that class. Students and employees who do not wear a mask in classrooms and other indoor public spaces on UNM campuses are subject to disciplinary actions. **Medical/health grade masks are the best protection against the omicron variant and these masks should be used, rather than cloth.**

Please do not come to a UNM campus if you are experiencing symptoms of illness, or have received a positive COVID-19 test (even if you have no symptoms). Contact your instructors and let them know that you should not come to class due to symptoms or diagnosis. Students who need support addressing a health or personal event or crisis can make an appointment with a counselor by calling 505-925-8591 for the PASOS Resource Center.