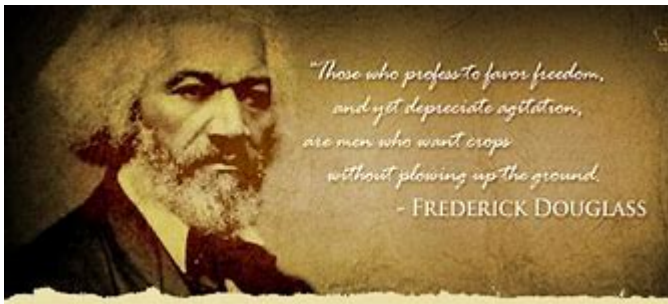
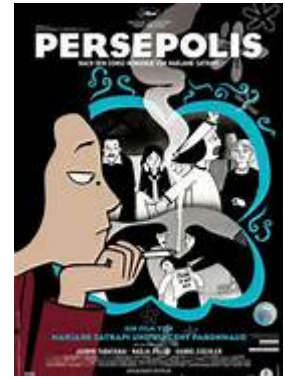


SP21_ENGL_2660_501 CRN _ 50025 CunicoJ



English 2660-501. World Literature II - Spring 2022

Dr. Juliette Cunico

Course Description: English 2660 is one of the courses in the World Literature Survey that fulfills Humanities and Fine Arts core curriculum requirements. After reflecting briefly upon “What has come before,” students will read representative world masterpieces from the 1600s to the present and engage with these key literary works from a variety of the world’s cultural traditions. Students will broaden their understanding of literature and their knowledge of other cultures through exploration of how literature represents the individuals, ideas and customs of each. The course focuses strongly on examining the ways literature and culture intersect and define each other, as well as how those elements are reflected in the paintings, music, and other visuals of the time.

Our survey is organized by historical period and the general theme of crossing cultural boundaries. We will read major works from Western and Eastern Europe, the Americas, Canada, Africa, India, China, and Japan. As we analyze and enjoy these narratives, stories, poems, plays, and essays, we will also become familiar with the major political, social, and cultural contexts which shaped them. Throughout the course, we uncover the diverse threads woven into the intricate tapestry of our contemporary global culture and discover how the issues and themes raised in the texts reflect themselves in our perceptions of current events, social norms, political ideologies, and cultural constructs. As part of our discovery, we’ll also read two graphic memoirs, paired with film adaptations.

Required Texts and Materials. You will not need the *Norton* textbook until the second week of classes, but please purchase it as soon as you can. For the required texts, you have two format options:

- **Either** *The Norton Anthology of World Literature*. Shorter 4th edition, Vol. 2. Edited by Martin Puchner, et al. W.W. Norton, 2019. Print ISBN-13: 978-0-393-60288-3 paperback,
- Or** The Shorter 4th edition, Vol. 2. **eText** - ISBN: 9780393544176, 0393544176. Either one is fine; the ebook's contents are the same as the paperback, and the page numbers are the same for both versions.

The Ebook for Volume 2 of *The Norton Anthology of World Literature*, Shorter Fourth Edition is available through third-party ebook retailers; the paperback version can be ordered directly from the publisher, from the UNM Valencia bookstore, or through Amazon and other sellers.

- Milton, John. Selections from *Paradise Lost*. **Free. In Project Gutenberg in Learn.**
- Satrapi, Marjane. *The Complete Persepolis*. Knopf Doubleday Publishing Group, 2007. Paperback. ISBN 13: 9780375714832 (978-0-375-71483-2) **There are used copies available for as low as \$4.00**
- Spiegelman, Art. *The Complete MAUS*. Penguin Books, 2003. Paperback. ISBN 13: 9780141014081 (978-0-14-101408-1) **There are used copies available for as low as \$4.00**

Once you have your textbooks, you will need to register for the **Norton InQuizitives** . Registration instructions are posted in **START HERE**.

Main Campus students can order the *Norton* text directly from the publisher. <https://wwnorton.com/catalog/textbooks/college/english#> (recommended) or purchase them from the UNM-V bookstore. Visit the bookstore website <http://bookstore.valencia.unm.edu/Home> or call 925-8801 and place your order. The books will be shipped to you

Supplemental Resources and Additional materials: These will consist of authors' background information, optional texts, audio recordings, films, instructional videos, art works, and other materials designed to help us gain a fuller understanding of the written text, as well as to serve as sources for papers. All resources are available (free) **in Course Resources in Learn and through the appropriate Norton websites.**

Oftentimes, current events, special programs, films, etc. that relate directly to our course material surface. When this happens, please send a course message to the class with details.

Web Resources: To find information on the historical and cultural contexts of the works we are reading, as well as timelines and links to other related websites, visit the websites listed in the assignment schedules.

A Film on Demand Account: This account must be set up through the UNMVC library <http://valencia.unm.edu/library/> even if you are a Main Campus student. Please contact any of the librarians at the UNM-Valencia Library 505-925-8990 | and they will set the account up for you. **If you come to campus (Valencia), anyone in the Library can help you set up the account. You must use the link from the UNM Valencia Library website; the Main Campus version of Films on Demand is not the same. For resources from main campus, please see <http://www.unm.edu/libraries/>**

Contact and Communication Information

Contact me anytime, either through, UNM email, by phone, or course messages. UNM email should be our primary communication channel, but if it's more efficient to do so from another device, and / or if Learn or UNM email is having issues, please feel free to call or text 505-220-7614. **I do not answer unidentified calls, so please leave a message. Include your name, a phone number, and the best time to call.** Alternatively, please feel free to text.

Virtual Office Hours pending Student Survey Results:

Monday and Wednesday 1:00-2:00 p.m. Wednesday meetup required.

Thursday 1:30-2:30 p.m.

Friday 1:00 p.m.

Individual Zoom Meetup by Request. When you need to discuss anything at a time different from office time, suggest a time(s) (late at night is fine) and email, Course Message me, or text. We will meet at that time. Go to **Zoom "Office" Hours and Meetup Times** and **click** on the Conferences link.

Online availability. Times may vary on Tuesday, Thursday, and Friday evenings and on weekends. I am not online on a regular basis on Saturday or Sunday, but I will login on those days.

Additional Contact Information: Justin Bendell (he/him/his). Chair, Humanities Division, UNM - Valencia jbendell@unm.edu

Success in Online Classes

Online classes require self-discipline and engagement with classmates, even more so than face-to-face classes. Here are some ways to help you be successful in this class.

- 1. Set and keep to an established study schedule that fits in with your individual schedule.**
- 2. Login to the course at least once a day to check for announcements, scheduling changes, etc.**
- 3. Make the most of online discussions.**
- 4. Ask thoughtful questions of both instructor and other students.**
- 5. Let the instructor know which techniques work best for you.**
- 6. Develop a personal motivation strategy.**

Participation. Full participation is required. Students are expected to check Learn daily and are responsible for all materials, assignments, responses to discussion topics, and any changes.

Check the assignment schedule and the announcements to find out what is due and whether assignments have been modified, omitted, or added.

Attendance. UNM requires that students' participation in online courses be monitored. I monitor attendance by checking assignment submissions, messages, and discussion participation. There will be two assignments due per week. Dates will vary, but plan to submit these during the first two weeks on the dates indicated in the announcements and / or in the assignment schedule. Response papers and quiz due dates will usually be Saturday or Sunday by midnight. You may, of course, submit assignments before the due date.

Student Learning Outcomes (SLOs)

By the end of this course you should be able to

- 1. Identify and comprehend key authors and literary works from the mid-1600s to the present.**
- 2. Understand each text's historical and cultural context.**
- 3. Identify and analyze a variety of literary forms, including poetry, plays, and philosophical and religious texts.**
- 4. Compare works from different cultures and historical periods examining genre, style, and content or theme.**
- 5. Analyze how literary works reflect historical, national, cultural, and ethnic differences.**

Positive Learning Environment

UNM affirms its commitment to the shared responsibility of instructors and students to foster and maintain a positive learning environment online and face-to face. This commitment has consequences for a range of academic and interpersonal dynamics. Many of our readings address political ideologies, religious beliefs, and

other “hot-button issues.” Some tend to be controversial and elicit strong emotions. It is therefore critical that in our discussions, we remain sensitive to one another’s viewpoints and feelings. If we respect each other’s ideas and opinions, we can maintain open dialogue and even engage in heated debate. The benefit of such open dialogue is that it helps us to understand what these texts tell us about not only its original audiences but also ourselves.

UNM Student Handbook.

The UNM Student Handbook contains, among other things, the Student Code of Conduct. See <https://pathfinder.unm.edu>

Racism, classism, sexism, homophobia/heterosexism, ableism, ageism, or any other discriminatory attitude will not be tolerated in this class. **Please feel free to share any concerns you might have.**



I support undocumented students.



SafeZone A “Safe Zone” is a place where students can talk to an instructor in a non-judgmental environment, receive support, and get connected to the resources they need to succeed. This class is free of racism, classism, sexism, homophobia /heterosexism, ableism, ageism, or any other discriminatory attitude.

Title IX

In an effort to meet obligations under Title IX, UNM faculty, Teaching Assistants, and Graduate Assistants are considered “responsible employees” by the Department of Education (see page 15 - <http://www2.ed.gov/about/offices/list/ocr/docs/qa-201404-title-ix.pdf>). This designation requires that any report of gender discrimination which includes sexual harassment, sexual misconduct and sexual violence made to a faculty member, TA, or GA must be reported to the Title IX Coordinator at the Office of Equal Opportunity (oeo.unm.edu). For more information on the campus policy regarding sexual misconduct, see: <https://policy.unm.edu/university-policies/2000/2740.html>.

Course Requirements

Students will

- Write a minimum of 3 response papers.
- Complete 3-4 short writing assignments.
- Engage in all online discussions
- Watch assigned films and videos available in Blackboard Learn or in Film on Demand
- Complete short quizzes over the assigned material (Norton InQuizitives).
- Complete two open book exams
- Complete one longer synthesis-type paper
- Complete all assignments in order to pass the course.

Course Grades

Students may earn a course grade of A, B, C, D (fractionated), F, or I

Course grades are based upon the following:

- Participation in and completion of 10 required discussion topics @ 6 points each.... 60 points
 - Policy Syllabus, Online Learning Skills, and Plagiarism Quiz20 points
 - Quizzes, including the NortonInQuizitives.....170 points
 - Short writing assignments (4 @ 50 points each.....200 points
 - Response / Analysis Papers (3 @ 100 points each)300 points
 - Two Open Book Exams @ 100 points each 200 points
 - A Course Synthesis Paper.....50 points
- Total Points possible = 1000**

Extra Credit is available. Completion of extra credit items will result in points added to your overall course grade. Extra credit is not a substitute for a missing assignment, however.

The following approved forms of extra credit work will count toward your grade:

2 points if you attend / view / listen to one of the following and post a summary of it on our Discussion Board within 48 hours: lecture, talk, performance, video recording, audio performance or recording, television program, or film related to our class focus.

Extra credit quizzes: If you complete one or more of these, the one with the highest score will replace a low score on a required quiz.

Additional extra credit opportunities are available in the Extra Credit Content area, Course Menu.

Points-to-Grade Conversion

There are 1000 points possible in this course. Grades will be determined using a traditional percentage system, with the appropriate plus or minus sign: 100-90% = A (1000-900 points); 89-80% = B (899-800 points); 79-73%= C (799-700 points); 69-60% = D (699-600); and below = F.

A+ 99-100+%	B+ 86-89.9%	C+ 76-79.9%	D+ 66-69.9%	F 0-59.9%
A 93-98.9%	B 83-86.9%	C 73-76.9%	D 63.66.9%	
A- 90-92.9%	B- 80-82.9%	C- 70-72.9%	D- 60-62.9%	

Discussion Topics: The topics are a combination of those posted by the instructor and students. Each student is to post at least one topic that **shares a new idea or formulates a question.**

Guidelines: Remember that your discussions, as well as your response papers, will be read with an eye to the timeliness, content, and completeness of your response as well as the overall coherence of the discussion. To communicate your thoughts clearly, be mindful of your sentence structure, grammar, punctuation, spelling, word choice, and so forth. While your responses and individual entries may use informal language, you are expected to present ideas in relatively error-free writing (i.e., few typos, no grammatical errors, no texting abbreviations, etc.). Again, these are not text or e-mail messages but rather reflections of your thought processes and reactions.

Discussion Topics: The topics are a combination of those posted by the instructor and students. Students will

- Respond to all 10 required topics, and please reply to at least two other postings.
- Post your own topic. Each student is to post at least one topic that **shares a new idea or formulates a question.**

Blog Posting. What's on your mind? Do you have a burning question? Do you want to start a conversation on a topic? Concerns? Create a thread in our "What's on your Mind?" blog. Anonymous postings are allowed.

This is your venue!

Writing Requirements and Policies

Requirements: The following are the general requirements for any written material.

Assignments must contain a Works Cited unless otherwise indicated; 2) include support from outside sources when appropriate; 3) use current (2016) MLA formatting for both parenthetical citations and the works cited page; 4) address the questions asked, and 5) not be plagiarized (See Plagiarism section).

Use MLA Parenthetical Citation (no footnotes) and a separate Works Cited. For the works cited page, **use the title Works Cited**; “Bibliography” is used only when the writer provides a lengthy list of everything major written about the topic!

Websites and other Sources for MLA formatting

MLA Handbook 2016

[MLA Style and Formatting \(Purdue Owl\)](#)

[MLA Rules \(UNM-Valencia Campus Library\)](#)

[MLA 8th ed. guide](#)

[APA help from APA](#)

[OWL Purdue Writing Lab](#)

[EasyBib.com](#)

[KnightCite \(Calvin College\)](#)

Nota bene: Do not use Wikipedia as a source. It is a good place to go for an overview and for references, but since anyone can edit it, it is not to be used as a reliable source itself.

Submission Dates: The date given on the paper needs to be the date the assignment was submitted.

Specific Requirements for Papers

- **Response/Analysis** papers should be a minimum **3-4 full pages** long, **plus a Works Cited** page
- Each paper must follow current (2016) MLA format unless otherwise indicated, both for parenthetical citations and the works cited page
- Address the questions asked
- **Contain at least three quotations for support** and not be plagiarized.
- **ALL sources must be cited in the text of the paper;** plagiarism, whether intentional or unintentional is can result in a failing grade. **See Plagiarism section.**
- **All papers must be completed to pass the course.** All papers must reflect an accurate reading of authors' ideas.

These papers require careful reading of the materials and support from outside sources as well as thinking hard about your own relationship to the texts. The short format of these papers should encourage you to focus on expressing your thoughts clearly and succinctly.

- **Shorter writing assignments:** Length will vary.
- All papers and other assignments **must** include your name, the name of the assignment, and the date submitted **in the document paper / quiz itself, not just in the message subject line.** **Assignments lacking that information will be returned and will not be graded until the information appears on the assignment itself.**

Graded assignments will be returned within 48 hours of submission unless otherwise notified.

Revisions: You may revise some of your assignments. Sometimes I will ask individuals to do so; other times, students will have that option. **The revision is due one week from the time of the graded original's return.** Revisions must illustrate substantial work, including both revising and editing and a date change in the identifying information. Revisions must be attached to the first graded draft. Some revisions may be graded holistically. **The revision grade replaces the original.**

Assessment: The response papers and short writing assignments will be assessed using the following criteria:

- 1) a demonstration of critical reading,
- 2) analysis and /or interpretation
- 3) an ethical and correct integration of research,
- 4) proper MLA documentation including works cited pages when required
- 5) show an understanding of the conventions of literature
- 6) address audience and purpose using effective strategies
- 7) maintain focus and mature expression of ideas
- 8) employ the conventions of Standard American English
- 9) revision which improves writing.
- 10) Times New Roman 12-point font, double-spaced, and least **THREE** quotations for support
- 11) Use only MLA format, 8th edition (2016). For the works cited page, use the title Works Cited; "Bibliography" is used only when the writer provides a full list of everything written about the topic! Use in-text citation – no footnotes!
- 12) Always title your paper.

Synthesis Paper / Essay

You will complete this assignment in the Discussion Board toward the end of the semester. **This assignment consists** of a synthesis and integration of your thoughts on the course focus, ideas, themes, readings, assignments, and discussions. While you need not every one of these (readings) be sure to reference "a goodly number." As you do so, look at the Student Learning Outcomes; choose **one**, and reflect upon how the above relate to that objective. Include a Works Cited which contains the texts you reference and is presented in correct MLA format.

Two Open Book Exams

The exams are not cumulative. Each will cover the material studied during the appropriate half of the semester. The questions will be a combination of single identifications, short answers, and short essays. The exams will incorporate definitions, short identifications of passages, characters, authors of works, and a short essay or two.

Late Assignment Policy

I do not accept late assignments unless

- a) you have contacted me in advance of the due date, and
- b) in my opinion, good and sufficient reason exists for so doing (I am flexible).

If you know that you will not be able to submit an assignment by the due date and time, please let me know. If an emergency prevents you from completing an assignment, please contact me right away, so that we can make arrangements. Assignments, if submitted late without explanation, will not be accepted. Students who do not respond to postings or who consistently submit papers late with no explanation will receive a lower course grade. Students will not be allowed to make up work missed without instructor permission.

Assignment Submission

Submit all papers and exams through the Assignments Links unless otherwise noted.

Include your name, the name of the assignment, and the date submitted in the paper / quiz itself. Dates must accurately reflect the date the paper -- draft or revision -- was submitted.

Plagiarism

Academic Honesty and Integrity: “Each student is expected to maintain the highest standards of honesty and integrity in academic and professional matters”—this statement, which you will find in the UNM Catalog and Pathfinder, establishes the expectations for the University, the College, the English Department, and this class. This means that you are expected to write your own papers, and to provide full and accurate citations when you use others’ specific language (words, phrases, sentences) visuals, or ideas.

Plagiarism is defined as presenting someone else's work, including the work of other students, as one's own, or submitting **your own work completed for another class without my permission**. Any ideas or materials taken from another source for either written or oral use must be fully acknowledged, both through in-text citation and in the Works Cited unless the information is common knowledge. What is considered "common knowledge" may differ from course to course.

1. A student **must not** adopt or reproduce ideas, opinions, theories, formulas, graphics, or pictures of another person without acknowledgment.
2. A student **must** give credit to the originality of others and **acknowledge** indebtedness whenever:
 - a. Directly quoting another person's actual words, whether oral or written;
 - b. Using another person's ideas, opinions, or theories;
 - c. Paraphrasing the words, ideas, opinions, or theories of others, whether oral or written;
 - d. Borrowing facts, statistics, or illustrative material; or
 - e. Offering materials assembled or collected by others in the form of projects or collections without acknowledgment.

(modified from *Code of Student Rights, Responsibilities, and Conduct*, [Part II, Student Responsibilities, Academic Misconduct](#), By action of the University Faculty Council (April 12, 2005) and the Trustees of Indiana University (June 24, 2005).)

The University considers plagiarism a serious form of academic dishonesty. Academic dishonesty, especially plagiarism, will not be tolerated and may result in administrative withdrawal with a final grade of F– and can result in dismissal from the University For UNM’s policies, refer to the UNM Catalog and the UNM Student Handbook– Pathfinder which defines academic dishonesty as “including, but not limited to, dishonesty in quizzes, tests, or assignments; claiming credit for work not done or done by others; hindering the academic work of other students; misrepresenting academic or professional qualifications within or without the University; and nondisclosure or misrepresentation in filling out applications or other University records” (2.4).

<https://pathfinder.unm.edu/>

If you do plagiarize, you will face one or more of the following consequences: failing the assignment, failing the course, or facing disciplinary action taken by the University. Any infraction of UNM’s policies on academic integrity and honesty will be documented and may also be reported to the Chair of CHESS. To avoid plagiarism, students can speak to the instructor, consult a tutor, and complete two Plagiarism Tutorials. You

can find these in the Plagiarism Tutorials folder located in “Tips for Successful Online Learning and How to Avoid Plagiarism,” Course Menu.

The departmental policy on cheating is as follows: If a paper is intentionally plagiarized, all or in part, the student will receive a "0" and may be reported to the CHESS Chair. Plagiarism is an offense that meets with dire consequences; simply put, it is theft.

Consequences: I check each paper for plagiarized material. Any paper which is plagiarized, either whole or in part will receive an automatic grade of 0. Students will NOT be allowed to redo the assignment. Plagiarism in this course will result in one or more of the following: failure of the assignment, failure of the course, or disciplinary action by the University.

This is not to say that students cannot use other sources; they should! Sources provide support for ideas. When using **any** sources, however, students **must** cite them properly. Students should also consult with the instructor and use the sources listed below to discover how to avoid plagiarism

Student Privacy: The Student Privacy Act, a federal statute called FERPA, strictly prohibits instructors or administrators from talking to anyone but the student about his/her grades, progress, or work. If a student has questions about a grade on an assignment or about the final grade for the course, FERPA dictates that the student is the **ONLY ONE** who may speak to the instructor regarding grades, work, or progress. In other words, UNM instructors and administrators cannot speak to parents or anyone else about student grades, progress, or work unless the student is present and gives his / her permission to do so.

Students can expect that UNM instructors and administrators will follow the guidelines set forth by FERPA.

Instructors and administrators

1) MUST and WILL protect student privacy.

2) CANNOT and WILL NOT discuss a grade with or hand back assignments to a student’s parents, friends, or relatives.

3) WILL NOT make any exceptions to this policy.

Grade Disputes

There are several guidelines concerning grade disputes, Below is a BRIEF outline of some of the policies.

1) A student must discuss the grade dispute with the instructor first.

2) If a student has discussed the problem with his/her instructor and if the problem has not been solved, then the student may discuss the problem with the Chair of the English Department.

3) If the student has discussed the problem with the Chair and if the problem has not been solved, then the student may discuss the grade dispute with the Dean of Instruction. Students can read more about how to dispute a grade by consulting the University of New Mexico Student Handbook, which outlines the procedure in detail.

Accessibility Services

In accordance with University Policy 2310 and the Americans with Disabilities Act (ADA), accommodations may be made for qualifying students. If you qualify for ADA or have a disability that I need to provide accommodation for, please let me know, as I am not legally permitted to inquire. You should also contact UNM’s Accessibility Services at 277-3506 or online at: as.unm.edu/home

Conferences: I want you to succeed in this class. If you are having difficulty, please contact me right away--don't wait until you feel completely lost. Keep the lines of communication open. E-mail me; arrange a time to meet--whatever we need.

MOST IMPORTANT! This is your class. Do not hesitate to ask questions and / or voice your opinions. It is not my intention to tell you **what** to think; instead it is to act as a guide through ways in **how** to think about these texts and issues.

Please see Updated UNM COVID 19 INFO in START HERE, first item on the course menu, and attached below.

UNM COVID-19 Updates for UNM Main & Branch Campus Students and Instructors. Spring 2022.

UNM requires COVID-19 vaccination and a booster for all students, faculty, and staff, or an approved exemption (see: UNM Administrative Mandate on Required Vaccinations).

Proof of vaccination and booster, or a medical, religious, or online remote exemption, must be uploaded to the UNM vaccination verification site. Failure to provide this proof may result in a registration hold and/or disenrollment for students and disciplinary action for UNM employees.

Booster Requirement: Individuals who received their second dose of a Pfizer or Moderna vaccine on or before June 15, 2021, or their single dose of a Johnson & Johnson vaccine on or before October 15, 2021, must provide documentation of receipt of a booster

dose no later than January 17, 2022.

Individuals who received their second dose of a Pfizer or Moderna vaccine after June 15, 2021 or who received their single dose of Johnson & Johnson after November 15, 2021 must provide documentation of receipt of a booster within four weeks of eligibility, according to the criteria provided by the FDA (6 months after completing an initial two- dose Moderna vaccine, 5 months after completing the Pfizer sequence, and 2 months after receiving a one-dose Johnson and Johnson vaccine).

International students: Consult with the Global Education Office.

Exemptions: Individuals who cannot yet obtain a booster due to illness should request [a medical, religious, or online remote exemption](#) (which may have an end date) and upload this to the [vaccination verification site](#).

Medical and religious exemptions validated in Fall 2021 (see your email confirmation) are also valid for Spring 2022 *unless an end date was specified in the granting of a limited medical exemption*. Students must apply for a remote online exemption every semester.

All students, staff, and instructors are required to wear face masks in indoor classes, labs, studios and meetings on UNM campuses, see the [masking requirement](#). Students who do not wear a mask indoors on UNM campuses can expect to be asked to leave the classroom and to be dropped from a class if failure to wear a mask occurs more than once in that class. Students and employees who do not wear a mask in classrooms and other indoor public spaces on UNM campuses are subject to disciplinary actions. **Medical/health grade masks are the best protection against the omicron variant and these masks should be used, rather than cloth.**

Symptoms and Positive Test Results:

Please do not come to a UNM campus if you are experiencing symptoms of illness or have received a positive COVID-19 test (even if you have no symptoms). Contact your instructors and let them know that you should not come to class due to symptoms or diagnosis. Students who need support addressing a health or personal event or crisis can find it at the [Lobo Respect Advocacy Center](#).

Please see UNM-Main and UNM-Valencia Student Support Services in the Course Menu for full details

Technical Support from UNM-Valencia or UNM-Main Campus

All Campuses Computer Support 505-277-5757

UNM-VC Computer Support 505-925-8911

Learn Support: <http://online.unm.edu/help/learn/support/index.html>
(505) 277-0857 learn@unm.edu

UNM-Valencia Library <http://valencia.unm.edu/library/> Contact Barbara Lovato, Library Director, 925-8991; Kat Gullahorn, Public Services Librarian, 925-8993, or Cory Meyer, Technical Information Specialist II. 925-8992. **UNM-Main** <http://www.unm.edu/libraries/>

Accessibility Support

UNM's Accessibility Resource Center <http://as2.unm.edu> 505-277-3506

Alternate Format Course Materials

If you are a student with a disability who is having problems with any of the content delivered through UNM Learn, you should contact your instructor and the UNM [Accessibility Resource Center](#). Your instructor may be able to provide you with a more accessible version of the information or make other accessibility accommodations. Resource Center staff can help both of you determine the best format.

Adaptive Technology Support

Resource Center staff may also be able to provide you with access to adaptive technology that can help you use UNM Learn course sites. The [Accessibility Resource Center](#) website contains a listing of computer labs and adaptive software available to Resource Center clients. **Contact Details for ARC**
Phone: (505) 277-3506 Fax: (505) 277-3750 Email: arcsrvs@unm.edu

UNM-VC Academic Services Support, and Student Services Support
<http://valencia.unm.edu/students/student-services.html> (505) 925-8581

Additional Student Support Services

Veterans Resource Center (<http://vrc.unm.edu/>) (505) 277-3181

Student Services Affairs UNM-VC (505) 925-8560

Student Support Services-TRiO <http://ceop.unm.edu/sss/index.html>

LGBTQ Resource Center <http://lgbtqrc.unm.edu/> 277-5428, 277-LGBT

UNM Dream Team (unmdream@unm.edu) The UNM Dream Team is committed to create power for multigenerational, undocumented, and mixed status families towards liberation. UNM Dream Team is an affiliate of the [New Mexico Dream Team and United We Dream](#).

Blackboard Learn

Blackboard, the company that develops the Learn software, is committed to ensuring that the software is usable and [accessible](#). Blackboard measures and evaluates accessibility levels using two sets of standards: Web Content Accessibility Guidelines (WCAG) issued by the World Wide Web Consortium (W3C) and Section 508 of the Rehabilitation Act issued in the United States federal government. The Learn software has been awarded Non-visual Accessibility Gold Certification by the National Federation of the Blind.

If you have any concerns regarding the functionality of the UNM Learn application in relation to accessibility, please contact the [UNM Learn Support team](#).