

SYLLABUS FOR INTRODUCTION TO SOCIOLOGY (FALL 2021)

SOCI 1110 SECTION 502 (3-CREDIT) / CRN 63803

A 16-WEEK ONLINE COURSE (8/23 – 12/10)

THE UNIVERSITY OF NEW MEXICO—VALENCIA

This syllabus is also available [via Sway](#) (signin required)

Instructor: Dr. Julia Wai-Yin So

Office HR: M 1:00 – 2:00 PM or by appointment

Schedule a One-on-One virtual meeting via MS-Teams with me at [Calendly](#).

General questions: use the *Course Café blog* to post a question to other peers

Course e-mail: use the *Send Messages* button (I will respond within 24 business hours)

Emergency contact: call the Academic Office at 505-925-8600 during regular office hours (MDT)



Table of Contents

Course description: p. 1
Course Learning Outcomes: p. 2-3
Required Materials: p. 1-2
Attendance Policy: p. 4
Code of Conduct: p. 3
IT Support: p. 1 & 4
Grading Scheme: p. 6 - 7
Assignments: p. 5 - 7
Course Schedule: p. 7 - 9
Campus Resources: p. 9 - 10

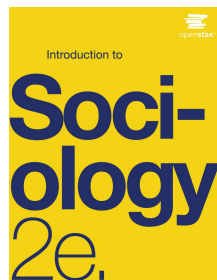
COURSE DESCRIPTION

This is a 16-week online **college course** compressed into an 8-week semester. You should do well if you follow the course schedule in reading, writing, discussing, and submitting assignment. Designed to introduce the basic **concepts and theories of sociology**, as well as to the **methods utilized in sociological research**, this course addresses how sociological concepts and theories can be utilized to analyze and interpret our social world, and describes how profoundly **society and groups influence us**. Our “taken-for-granted” or “common sense” understandings about society, social issues and institutions will be examined. Special attention will be paid to the intimate **connections between personal lives and the larger structural features of social life**. The implications of social inequalities, such as race/ethnicity, gender, and social class will also be discussed.

Required Textbooks & Materials

1. [Introduction to Sociology](#) (2nd edition). OpenStax College. 2015.
ISBN-10 1938168410 or ISBN-13 978-1-938168-41-3.

Free download at:

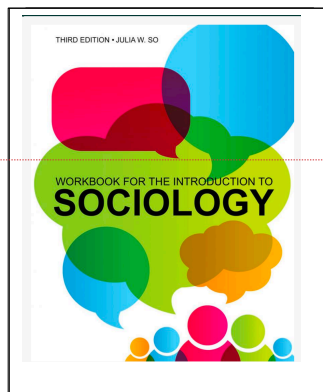


2. [Workbook for Introduction to Sociology.](#)

Julia W. So. 2020. (3rd ed.) Kendall Hunt Publishing Company.
Coil-bound hard copy: ISBN 9781524955847.
eWorkbook: ISBN 9781524959661

[Available](#) at the campus bookstore. Please note that *all* Royalties from the sales of the workbook are donated to Valencia's scholarship fund.

Or purchase it online at:



Deleted: Purchase it

3. A [valid UNM email address](#)
4. For full functionality of UNM Learn, use a [supported browser and OS](#) instead of the [mobileapp](#).
5. Individual personal account to access [Films on Demand](#) from UNM-Valencia Library
6. (login ID is Valencia1 and password is library)
6. A one-inch 3-ring binder & one pack of 4-tab dividers to organize your notes, handouts, and assignments by three unit.

Course Learning Outcomes

At the end of the semester, when you do your part as a student, you will be able to:

COURSE LEARNING OUTCOMES ON CONTENT	COURSE LEARNING OUTCOMES ON ESSENTIAL SKILLS ¹
Unit 1 <ul style="list-style-type: none"> • Apply the perspectives of symbolic interactionist theory, conflict theory and structural-functionalist theory to qualitative and/or quantitative data (Workbook set 1) • Describe the three sociological perspectives and illustrate their application (Workbook set 1 - 3) • Define <i>sociological imagination</i> and explain the relationships between social structure, social forces, and individuals (Workbook set 1) 	Communication <ul style="list-style-type: none"> • Verbal communication with peers & instructor • Written communication expressed in Discussion Forum and Reflection Learning Journals • Reading & analyzing reading assignments • Evaluating & presenting an argument Critical Thinking <ul style="list-style-type: none"> • Problem setting • Evidence acquisition

¹ The rubrics for the three areas of essential skills are in the Treasure Folder of this course at UNM Learn.
Syllabus for SOC 1110-502 (Fall 2021): Page 2 of 10 Pages
UNM-Valencia/Dr. Julia W. So
Course instructor reserves the right to modify this syllabus

<ul style="list-style-type: none"> Describe the contributions that sociological knowledge can bring to the social sciences (Workbook sets 2 - 3) 	<ul style="list-style-type: none"> Evidence evaluation Making an argument & drawing conclusion
Unit 2 <ul style="list-style-type: none"> Explain the relationships between social structure, social forces, and individuals (Workbook sets 4 - 7) Describe the three sociological perspectives and illustrate their application (Workbook set 4 - 7) 	Personal & Social Responsibility <ul style="list-style-type: none"> Intercultural understanding and competence Explain & work with issues pertaining to human activities Ethical reasoning on human problems Teamwork & collaboration skills Civic knowledge, discourse & engagement
Unit 3 <ul style="list-style-type: none"> Explain the relationships between social structure, social forces, and individuals (Workbook sets 8, 9 & 10) Explain intersectionality and the connections between race, class, gender, disability, sexual identity and other forms of structural inequality (Workbook sets 8, 9 & 10) 	
Code of Conduct	

Students will be disciplined when engaged in any behaviors that “affect adversely the University’s educational function...or...interfere with the rights of others to pursue their education, to conduct their University duties and responsibilities or to participate in University activities” per [UNM policy](#).

Mutual respect is expected between students as well as between you and me, your professor. In an effort to meet obligations under Title IX,

UNM faculty are considered “responsible employees” by the Department of Education (see [p. 15](#)). This designation requires that any report of gender discrimination which includes sexual harassment, sexual misconduct or sexual violence made to a faculty member must be reported to the Title IX Coordinator at the Office of Equal Opportunity ([oeo.unm.edu](#)) at Main Campus. Read more information on the [campus policy regarding sexual misconduct](#).

Academic Dishonesty includes “dishonesty in quizzes, tests, or assignments; claiming credit for work not done by you or done by others; hindering the academic work of other students” and **Plagiarism**—an academic theft. It is when you copy an idea or any text that is more than six words from any source, including the Internet or your friends, without citing the source. To avoid plagiarism, you must enclose whatever you copy in quotation marks and cite the source. Any student suspected of academic dishonesty will be subject to the investigative and [disciplinary process of UNM](#).

This course has a **zero tolerance policy** on academic dishonesty. When found guilty, the student will be dropped from the course and a report will be submitted to the Instruction Dean. The same report will be kept in the student’s academic file.



Attendance Policy

Attendance is recorded by submission of assignments. You will be dropped from the course with two consecutive missed assignments. **If you are on financial aid, I urge you to complete the assignments on time and participate in the Discussion Forums, so you will pass this course and keep your future eligibility for financial aid.**

Technology Requirements

As an online course, all instructional content and interaction will take place over the Internet. First and foremost, please be sure that you have **Internet access**. Not having Internet access will prevent you from completing / submitting assignments on time. To succeed in this course, you also need to have a competence level in basic typing skills, proficiency in operating MS-WORD, converting files into PDF formats, uploading / downloading files in *UNM Learn*, as well as sending / receiving e-mail with PDF/WORD attachments.

Copyright 1997 Randy Glasbergen www.glasbergen.com



Technology Assistance

If you encounter problems while assessing *UNM Learn* or other online related issues, please create a support ticket either under Main Campus' UNM Learn or under Valencia's IT

[Support Service](#). Both accesses are located on the left panel of the course page. Please read additional [Online Learning Resources](#).

Mutual Expectation

This is a college course—it requires both reading writing, and critical thinking. If you dislike reading and/or writing, this is your opportunity to cultivate such habits. This course is also your opportunity to acquire the habit of a critical thinker. Since this online course is not self-paced, to succeed this course, I highly encouraged you to independently complete the following activities for each module:

- participate in all units' *Discussion Forum*
- read between 40 and 60 pages of assignments
- complete both the individual and team learning activities
- watch online videos from various websites or at *Films on Demand* (**login Username: valencia1 / password: library**)
- check *Announcements* in *UNM Learn* every other day.

COMMUNICATION WITH ME

You have three ways to reach me:

1. via the *Send Messages* (will respond within 24 business hours);
2. make an appointment with me at [Calendly](#). We will meet via MS-Teams. I am generally available from 10 AM to 4 PM, Monday, Wednesday and Friday; and
3. post a question at the *Course Café blog* located on the left panel of the course page

YOU CAN EXPECT ME TO ...

- not accept late work or work that is not typed.
- respond to your *Messages* in UNM Learn by the next business day.
- return all assignments in no more than two weeks.

YOU CAN ALSO EXPECT ME TO DROP YOU WHEN YOU...

- miss two consecutive assignments, or
- do not login to UNM Learn two weeks continuously.



Course Grading Scheme – A Roadmap to your Course Success

What suggestions would you give to future students to help them succeed in this course?

Keep up with the work. Dr. So is not kidding when she says you'll pass if you show up and do your work!!

TO EXCEL THIS CLASS, I HIGHLY RECOMMEND YOU...

spend a minimum of 10 hours per week on learning activities pertaining to this course. They are: (1) completing the Team Learning Activities Sheet (TLAS) with your assigned

team, (2) participating in the Discussion Forums, and (3) submitting three journals.

No late work is accepted, nor is hand-written work, unless permitted otherwise.

3 Journals (individual learning)	300 (37%)
3 Discussions + self-introduction (individual + team learning)	160 (20%)
<u>7 Team Learning Activities Sheet (individual + team learning)</u>	<u>350 (43%)</u>
Total	810

Access to all assignments is on Friday at 12:01 AM.

All assignments are due on Friday at 11:59 PM, except Fall Break and Thanksgiving Holiday.

You have two weeks to work on each module, three weeks to work on Discussions, and one week to work on the unit journal after the last module is due

7 TEAM LEARNING ACTIVITIES SHEET (TLAS)--350 POINTS

You are to complete the assignment independently, then discuss with your assigned team to agree on the answers on the assignment. Team members will take turn to type the answers and to submit the assignments. **You do not receive any credits for any TLAS that you do not participate in the team discussion.** If you submit your individual answers, you will receive half the credit of the TLAS submitted by your Team. Each TLAS is worth 50 points. **The lowest grade of the 8 TLAS will be dropped.**

3 REFLECTION LEARNING JOURNALS (300 POINTS)

Instead of exams, three Reflection Learning Journals are required for this course—one for each unit. Each journal is worth 100 points. All journals have to be at least 1,000 words (about 4 pages with

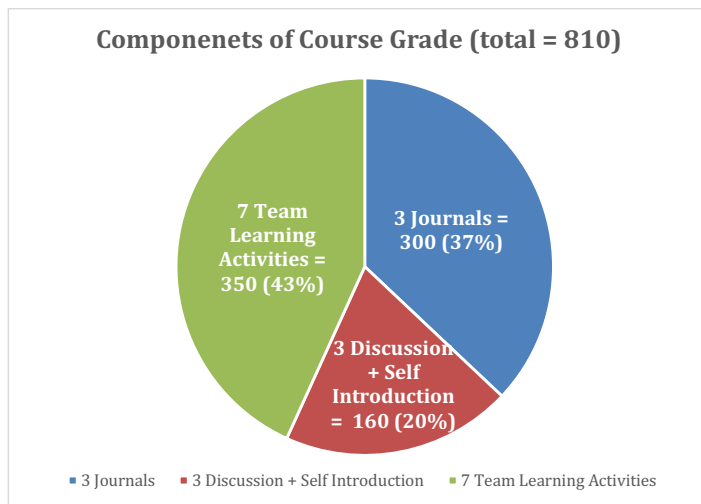
Deleted: will

Deleted: and

Deleted: the

double-spacing) and address the questions listed on the assignment sheet. A grading matrix is provided for each journal.

To ensure you complete the Journal assignment correctly, please schedule a tutoring session with Marissa Weldon from the Writing Center at [To ensure you complete the Journal assignment correctly, please schedule a tutoring session with Writing Consultant, Marissa Weldon, from the Writing Center at tutorunmv14@unm.edu](mailto:tutorunmv14@unm.edu)



3 DISCUSSION FORUMS: (160 POINTS)

We have a total of three discussion forums—one for each unit. Your participation in each Discussion Forum will earn you a maximum of 50 points. The topics on each forum are from the readings and/or videos assigned for the unit. Worth 50 points, each posting includes one initial posting and two response posting. A

grading rubric is provided for each forum. Last but not least, **before Friday 9/10/2021 at 11:59 PM**, please be sure to post a self-introduction to the entire class and respond to two of your peers. The self-introduction posting is worth 10 points.

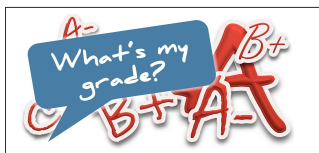
Guidelines for group discussions:

- recognize we all have misinformation
- acknowledge we live in a society where various forms of privilege and oppression exist
- appreciate your peers are like you--doing the best they can to learn
- listen with an open mind and speak with an open heart
- practice active listening



*According to [UNM policy](#), the passing grade of all sociology courses is a “C.” Students must complete all course requirements to earn credit for the course. Those who fail to complete the requirements will be assigned an “F”. The final letter grade will be posted on LoboWeb. It is based on the following:

802 - 810	A+
746 – 801.9	A
713 – 745.9	B+
664 – 712.9	B
632 – 663.9	C+
<u>583 – 631.9</u>	<u>C</u> Any grade less 583 is a failing grade, including D+ or D
551 – 582.9	D+
486 – 550.9	D
< 486	F



To excel in this class, I highly recommend you follow the course schedule and do the work.

Course Schedule of Learning Activities

*Set refers to the workbook & Ch refers to the textbook

Unit I – The Study of Society, Culture, & Social Structure

Wk	Date	Module	Set	Ch	Learning Activities
1	8/23 (M)	1	1	1	Team Assignment – make sure to work with your team for all Modules Download Module 1 TLAS 1 (Set 1: An Introduction to Sociology)
2	9/3 (F)	2	2	3	Due – Module 1 TLAS 1 at 11:59 PM Download Module 2 TLAS 2 (Set 2: Culture) Unit 1 Discussion 1 on <i>Food Inc.</i> is open
3	9/10 (F)	3	3	6&4	Due – Student intake form & meet with me at 11:59 PM Due – Self-introduction posting & responses at 11:59 PM Download Module 3 TLAS 3 (Set 3: Groups & Organization) Census Day - Last Day to drop without a “W”
4	9/17 (F)				Due – Module 2 TLAS 2 at 11:59 PM
5	9/24 (F)				Due – Unit 1 Discussion 1 on <i>Food Inc.</i> at 11:59 PM
6	10/1 (F)	4	4	5&7	Due – Module 3 TLAS 3 11:59 PM Download Module 4 TLAS 4 (Set 4: Socialization) Unit 2 Discussion 2 on <i>Raising Cain</i> is open
7	10/8 (F)				Due – Journal 1 at 11:59 PM

Unit II – Socialization and Social Institutions

Wk	Date	Module	Set	Ch	Learning Activities
8	10/15 (F)	5	5	14	Fall Break 10/14 & 10/15 Download Module 5 TLAS 5 (Set 5: Family)
9	10/18 (M)				Due – Module 4 TLAS 4 at 11:59 PM (scheduled late submission due to Fall Break)
	10/22 (F)	5	5	14	Due – Unit 2 Discussion 2 on <i>Raising Cain</i> at 11:59 PM
10	10/29 (F)	6	6&7	16 & 18	Due – Module 5 TLAS 5 at 11:59 PM Download Module 6 TLAS 6 (Set 6: Education / Set 7: Work)
11	11/5 (F)				No assignment due
12	11/12 (F)	7	8&9	9 & 11	Due – Module 6 TLAS 6 at 11:59 PM Download Module 7 TLAS 7 (Set 8: Social Stratification in the US / Set 9: Race & Ethnicity) Unit 3 Discussion 3 on <i>Health and Wealth</i> is open Last day to withdraw on LoboWeb without Dean's Permission

Unit III – Social Inequality

Wk	Date	Module	Set	Ch	Learning Activities
13	11/19 (F)	7	8 & 9	9 & 11	Due – Journal 2 Work on TLAS 7
14					11/25 & 11/26 Thanksgiving Holiday Download Module 8 Team Learning Activities Sheet (Set 10: Gender, Sex & Sexuality)
15	11/29 (M)	8	10	12	Due – Module 7 TLAS 7 at 11:59 PM (scheduled late submission due to Fall Break)
15	12/3 (F)				Due – Unit 3 Discussion 3 posting at 11:59 PM Last day to withdraw <u>with</u> the permission from the Dean of Instruction
16	12/10 (F)				Last week of instruction Due – Module 8 TLAS 8 at 11:59 PM
	12/13 (M)				Due – Journal 3 at 11:59 PM

Your Success in this Course Depends on YOU!

Your Success in Life Also Depends on YOU!

For Campus resources during the Covid-19 Pandemic, please visit [Campus Covid Resources](#).

RESOURCES TO HELP YOU SUCCEED ACADEMICALLY
(INFO ACCESSED FROM UNM-VALENCIA WEBSITE ON 8/10/2021)

Universal Design for Learning Principles (UDL)

To create a more inclusive learning environment, I try my best to employ Universal Design for Learning (UDL) principles, which emphasize the use of multiple means of representation, expression and engagement during lesson development in order to effectively reach the widest possible number of students from the outset, rather than through individual "retrofits" of instruction and assessment.

VETERAN SUPPORT SERVICES: If you are a veteran, I strongly encourage you to **identify yourself** to me, especially if you seek awareness for or need accommodations. For additional assistance, please contact Frances Duran (Campus Branch Registrar) at 505-925-8585 or fduran@unm.edu

SUPPORT SERVICES FOR STUDENTS WITH DIFFERENT NEEDS:

In accordance with [University Policy 2310](#) and Americans with Disabilities Act (ADA), any student who, because of a disability, may require certain arrangements in order to meet course requirements should contact the instructor as soon as possible to make necessary accommodations. If you are a student with **documented** physical or learning disability, please notify me during the first week of class. If you have special need and require accommodation in the classroom or other academic setting, it is **your** responsibility to contact the [Office of Equal Access Services](#) at 505-925-8560.

ACCOMMODATION FOR SPIRITUAL TRADITION AND/OR FAITH-BASED OBSERVATION

Please notify me of your obligations to spiritual tradition or faith affiliation. Reasonable accommodation for such observances, upon request in advance, will be considered.

Citizenship and/or Immigration Status: I welcome all students in this class regardless of citizenship,

residency, or immigration status. **I respect your privacy if you choose to disclose your status.** As for all students in the class, family emergency-related absences are generally excused with reasonable notice to the professor, as noted in the attendance guidelines above. UNM has made a core commitment to the success of all our students, including members of our undocumented community (<http://undocumented.unm.edu/>)

I am an Ally of NM Dream Team



Safe Zone Areas

Located throughout the campus, these areas offer a safe space for LGBTQI students to share a conversation. You are welcome in my office.



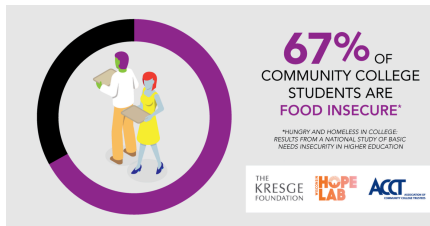
GENDER NEUTRAL RESTROOMS

They are three: two are inside the Writing Center and the third one is next to the elevator between Nursing Education Center and Student Community Center.



Food and Housing Insecurity

Any student who has difficulty affording groceries or accessing sufficient food to eat every day, or who lacks a safe and stable place to live and believes your food and housing insecurity may affect your performance in this course, is urged to **contact Senior Student Success Specialist--Nazareth Garcia** (ngarcia25@unm.edu or 505-379-3911) for support. Furthermore, if you feel comfortable to let me know of your situation, not only will I respect your privacy, but will also share any resources that I know of.



Course/Campus Resources:

- The Purdue Online Writing Lab at: <https://owl.purdue.edu/>
- Campus Police: (505) 925-8570
- Career Services: (505) 925-8840
- Class Capture inside UNM Learn
- Computer Support: (505) 925-8911
- Testing Center: (505) 925-8560
- The Learning Commons: (505) 925-8907
- The Library: (505) 925-8990 / Text a librarian: 505-916-1647
- The Wellness Center: (505) 925-8830
- The Writing Center: (505) 925-8548
- Get LoboGuardian & be safe: <https://loboguardian.unm.edu/>
- **Stressed?** Call Agora Crisis Center at 505-277-3013 or 855-505-4505