

UV

Welcome to University 102 Research Methods! This course is an overview of how to find, read, and critique scientific research articles. By the end of the course you will be able to discuss and present scientific knowledge.



- 1.) Students will display an understanding of the scientific method.
- 2.) Students will show the ability to conduct literature searches to find relevant scientific articles.
- 3.) Students will exhibit familiarity with the different types of scientific literature and will be able to distinguish between and identify examples of each.
- 4.) Students will demonstrate competency in presenting and communicating scientific Information.



Drop in hours*:
 Mondays: 10:30-12:00
 Tuesdays 10:30-12:00
 Wednesdays: 10:30-12:00
 Thursdays: 12:00-1:30
 *And really, anytime my door
 is open outside of these

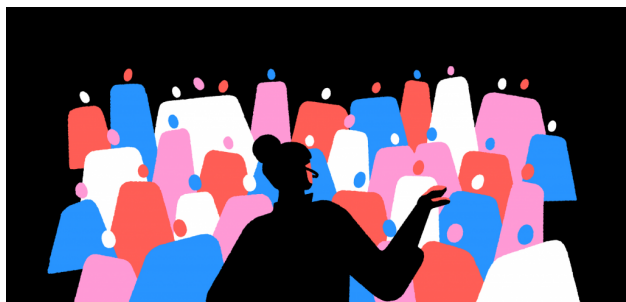
Learning Objectives.....	1
Tips to Succeed in this course.....	2
Course policies and assignments...	3
Grading criteria.....	3
Schedule with due dates.....	4

Course Webpage:

We will be using the new Canvas platform this year, canvas.unm.edu. Our class will make some use of this, though there will not be any required information or assignments provided only there. You will be able to find documents like the assignment descriptions and grading rubrics in the 'files' tab. Grades will be posted here as well. Finally, the syllabus with schedule of activities and assignments will be found here.

Textbook:

There is **No** textbook for this course. All activities, assignments and other handouts will be provided for you by your instructor. Digital copies will also be made available on the course Canvas page.



Tips for Success in this Course:

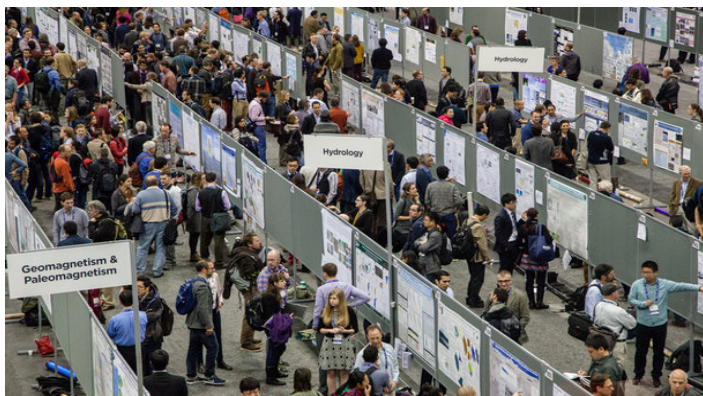
- Attend class regularly.
- Prepare thoroughly for your presentations by making use of the examples required and the grading rubric.
- Ask Questions!
- Actively participate in your group and class discussions.
- Communicate with instructor and group mates in the case of absence.



Hi all,

Welcome to biology 1110L! I am a molecular and evolutionary biologist, specializing in plant evolution and systematics. Currently, my research interests include systematics of Piñon pine in New Mexico as well as the microbial diversity in the Middle Rio Grande. When I am not working, I love music and running. I am excited to work with you all this spring!

COVID-19 Health and Awareness: [COVID-19 Health and Awareness](#). UNM is a mask friendly, but not a mask required, community. To be registered or employed at UNM, Students, faculty, and staff must all meet UNM's [Administrative Mandate on Required COVID-19 vaccination](#). If you are experiencing COVID-19 symptoms, please do not come to class. If you have a positive COVID-19 test, please stay home for five days and isolate yourself from others, per the [Centers for Disease Control \(CDC\) guidelines](#). If you do need to stay home, please communicate with me so that I can work with you to provide alternatives for course participation and completion. UNM faculty and staff know that these are challenging times. Please let me, an advisor, or another UNM staff member know that you need support so that we can connect you to the right resources. Please be aware that UNM will publish information on websites and email about any changes to our public health status and community response



Course Graded Assignments:

Presentations: Presenting information to the class will be a major component of this course. There will be three main presentations you will make throughout the semester. Each one will be as part of a group in which you will work. Two weeks before each presentation is due, you will receive a description of the assignment as well as the rubric upon which your presentation will be graded.

Class Participation: Actively participating with your group and within the course is essential to this course. As such, 100 of your points possible in the course will come from class participation. These points will be allotted based on: Regular attendance, being engaged in group work, completion of the smaller activities, asking questions of the other group during their presentations and participating in class discussions.

Title IX: Our classroom and our university should always be spaces of mutual respect, kindness, and support, without fear of discrimination, harassment, or violence. Should you ever need assistance or have concerns about incidents that violate this principle, please access the resources available to you on campus. Please note that, because UNM faculty, TAs, and Gas are considered "responsible employees" by the Department of Education, any disclosure of gender discrimination (including sexual harassment, sexual misconduct, and sexual violence) made to a faculty member, TA, or GA must be reported by that faculty member, TA, or GA to the university's Title IX coordinator. For more information on the campus policy regarding sexual misconduct, please see: <https://policy.unm.edu/university-policies/2000/2740.html>.



Course Grading Policy: Your grade in this class will be made up of the following:

100 points: Participation

25 points: Personal Introductions

75 points: Presentations (3 @ 25 points each)

100%=A+, 92-99=A, 90-91=A-, 89=B+, 82-88=B, 80-81=B-, 79=C+, 72-78=C, 70-71=C-, 69=D+, 62-68=D, 60-61=D-, <60=F.

Date	Lab Exercise	Assignments
1/19/2023	Course Introduction	Personal Introduction
1/26/2023	Personal Introductions, Scientific Method	
2/02/2023	Poster presentations	Poster critique
2/09/2023	Scientific papers	Paper critique
2/16/2023	Library day	Library assignment
2/23/2023	Science Journalism	Journalism assignment
3/02/2023	Group work	
3/09/2023	No Class: Fall Break	
3/16/2023	Journalism Presentations	
3/23/2023	Topic #2 Assignment	Topic 2
3/30/2023	Group work	
4/06/2023	Presentation #2	
4/13/2023	Topic #3 Assignment	Topic 3
4/23/2023	No Class: Thanksgiving	
4/30/2023	Oreology	
5/04/2023	Presentation #3	