

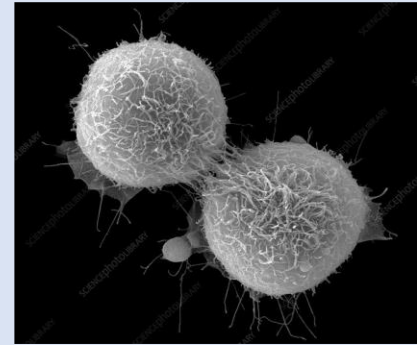
Modality: Online (Asynchronous)

### COURSE INFORMATION

This course introduces non-science majors to basic biological concepts, including, but not limited to the properties of life, biochemistry, cell biology, molecular biology, evolution, biodiversity, and ecology.

### MR. FRENCH’S COURSE DESCRIPTION

I love teaching Biology, the study of life. In this class we will start by learning about the molecules that are part of all cells. Yes, your cells and everything we eat are composed of molecules. Most of the semester we will spend learning about the cell; such wonderful little machines that do all the work within an organism. First, we will have to learn about all the cell components. Think of them as little organs (organelles). Then, we will have to learn about how our cells obtain energy from the food we eat. Next, we will discuss DNA that lies within our chromosomes; they are the molecules that determine what we look like and everything about us. Have you ever thought about cell division? Why do cells divide? Why do we need to make more cells? These questions will be answered during our discussion on mitosis and meiosis. We also will discuss how traits are passed from generation to generation. Look at your family and see what traits you share. The last part of the semester we will spend time talking about how we are just one of many amazing organisms living on the planet. We will discuss other organisms, how we have changed over time and how all organisms interact with the environment. Now you know why I love teaching Biology – we learn about our body, other organisms, and the environment around us. Bring the knowledge that you have and take the journey with me as you continue with your educational goals.



### WHAT’S IN THIS SYLLABUS

Instructor Information.....	2
Learning Outcomes.....	2
Learning Resources.....	3
Tips for Success.....	3
Course Policies.....	4
Grading Criteria.....	5
Course Outline.....	6

## Instructor's Information

**Victor French, M.S.**

**Office:** Rm. 125, Learning Resource Center

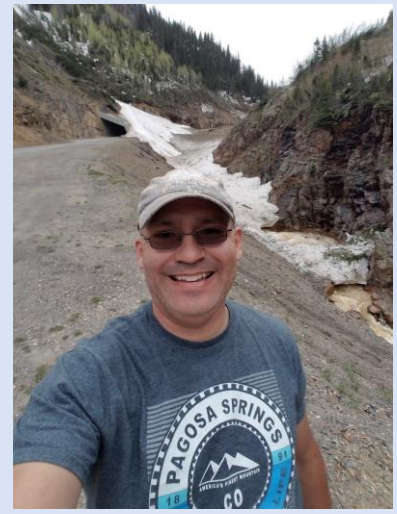
**Phone:** 1-505-925-8568

**E-mail:** vfrench@unm.edu

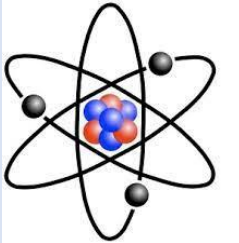
**Drop-in Hours:** I will be on campus this semester for drop-in visits.

- Monday, 8:00—9:00 a.m.
- Thursday, 8:00 — 10:00 a.m.

Please let me know in advance if you would like to meet in person. Online Zoom office hours are also available upon request.



I have been teaching for 18 years at UNM—Valencia. I am originally from Albuquerque and currently live in Belen.



## STUDENT LEARNING OUTCOMES

**The course is divided into six modules and at the completion of this course, students will be able to:**

### Introduction to biology

- Explain the value of the scientific method.
- Explain the importance of scientific method.

### Chemistry

- Explain how chemical and physical principles apply to biological processes at the cellular level.

### Cells

- Understand the basic concepts of cell biology.

### Genetics

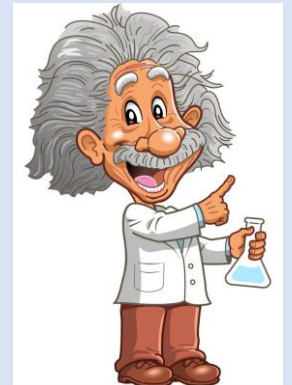
- Understand fundamental processes of molecular biology.

### Biodiversity

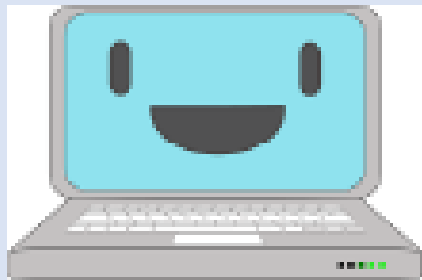
- Recognize the value of biodiversity.
- Understand methods for biological classification.

### Ecology and Evolution

- Understand the mechanisms of evolution, including natural selection, genetic drift, mutations, random mating, and gene flow.
- Understand that all organisms share properties of life as a consequence of their common ancestry.



# Concepts Biology



## REQUIRED LEARNING RESOURCES

1. Text: Concepts of Biology. This book is available in web view and PDF for free from Openstax.org. You can also get the digital version from Amazon for free or a printed copy for a low cost.
2. Course Webpage: <https://canvas.unm.edu>. The webpage contains resources you need to succeed in the course. Login using your UNM user name and password. You are responsible for all announcements, assignments, quizzes, tests and/or any changes to the syllabus will be posted on the webpage.
3. Technology & Computer: In this course, you will need the following technology and computer requirements:
  - Dependable computer.
  - Reliable internet connection.
  - Computer speakers.
  - Reliable web browser.
  - Microsoft Suite (PowerPoint and Word) Adobe Flash Player

“Opportunity is missed by most people because it is dressed in overalls and looks like work.” — Thomas Edison

## TIPS FOR SUCCESS

If you are feeling lost or overwhelmed....

- **PowerPoint Slides.** Use the PowerPoint slides for each chapter to guide your reading of the chapter. The Learning objectives should be used to make sure that you understand the material for each chapter.
- **Study habits.** Look at figures and read the chapter. It may take more than one reading to understand the material presented. Learn the vocabulary.
- **Office hours.** I am available to help you succeed in the class; stop by my office and I can clarify information or help you with homework.
- **Learning Center.** The learning center has tutors ready to help Biology 1110 students. Call the learning center at 925-8907 for available hours. They prefer to make appointments, but if they are not busy you may be able to drop in and find an available tutor. Appointments typically last one hour. Their website is <http://valencia.unm.edu/campus-resources/the-learning-center/index.html>.
- **Email netiquette.** Include an informative subject line (class and concern -- Bio 1110, quiz 3); include a salutation and closing (sign your name); do not use IM or TXT spelling, instead use standard English.



## COURSE POLICIES



- **Assignments.** There are nine assignments that must be turned in each Sunday at 11:59 p.m.; they will help you prepare for quizzes/tests. These assignments must be turned in through Canvas and are based on the current topic. You are allowed to get help from a tutor or work with another student. I also encourage you to contact me if you have any questions, but do not wait until the last minute. **The assignment has to be written in your own words.**
- **Review Packets.** There will be four review packets assigned throughout the semester. These graded assignments will help you apply the material that you have learned and prepare for the exam. They must be submitted through Canvas.
- **Late assignment/homework.** Late assignments will only be accepted within the first week following the due date. There will be a 50% reduction in grade. I will not accept assignments after the first week that the assignment was due.

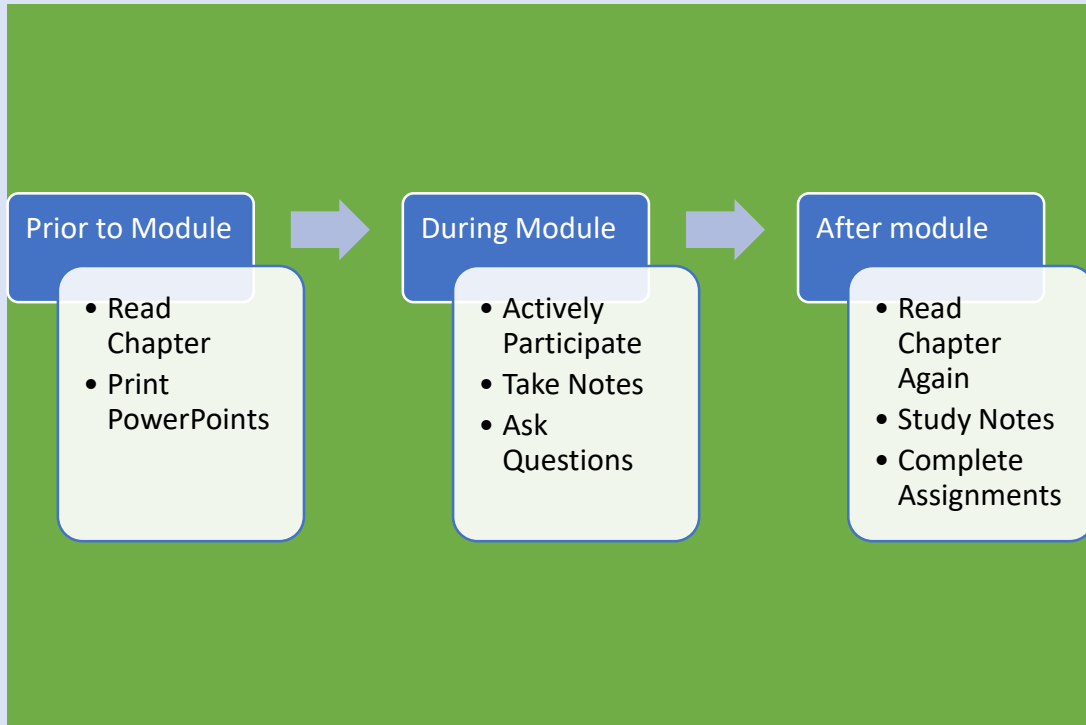
- **Quizzes.** Quizzes will be timed and you will be allowed to take each quiz twice if needed. You will also be allowed to drop one quiz. All quizzes are to be taken by Thursday at 11:59 p.m. Quizzes will be available on Wednesday morning.
- **Exams.** You will have a limited time to take each exam and only allowed to take it once. Prepare yourself and give yourself plenty of time before starting the exam. All exams are to be taken on Thursday by 11:59 p.m. The exams will typically be available on Tuesday morning.
- **Withdrawal.** If a student drops the course before **February 3rd**, it will not appear on their transcript. After **February 3rd**, a "W" will be issued.
- **Drop policy.** If a student misses three assignments/quizzes, he/she may be dropped from the class. Also, if a student has not logged in to Learn in two weeks he/she may be dropped.

## THINGS TO KEEP IN MIND

- **Accommodations:** UNM is committed to providing equitable access to learning opportunities for students with documented disabilities. As your instructor, it is my objective to facilitate an inclusive classroom setting, in which students have full access and opportunity to participate. To engage in a confidential conversation about the process for requesting reasonable accommodations for this class and/or program, please contact Student Services (505.925.8560).
- **Academic Dishonesty:** Each student is expected to maintain the highest standards of honesty and integrity in academic and professional matters. The University reserves the right to take disciplinary action, up to and including dismissal, against any student who is found guilty of academic dishonesty or otherwise fails to meet the standards. Any student judged to have engaged in academic dishonesty in course work may receive a reduced or failing grade for the work in question and/or for the course. Academic dishonesty includes, but is not limited to, dishonesty in quizzes, tests, or assignments; claiming credit for work not done or done by others; hindering the academic work of other students; misrepresenting academic or professional qualifications within or without the University; and nondisclosure or misrepresentation in filling out applications or other University records.
- **Equal Opportunity and Non-discrimination:** In an effort to meet obligations under Title IX, UNM faculty, Teaching Assistants, and Graduate Assistants are considered "responsible employees." This designation requires that any report of gender discrimination which includes sexual harassment, sexual misconduct and sexual violence made to a faculty member, TA, or GA must be reported to the Title IX Coordinator at the Office of Equal Opportunity (oeo.unm.edu). For more information on the campus policy regarding sexual misconduct, see: <https://policy.unm.edu/university-policies/2000/2740.html>

*"Honesty is the best policy."  
— Benjamin Franklin*

*Develop good study habits. Don't wait until the last minute.*



**GRADING CRITERIA—**

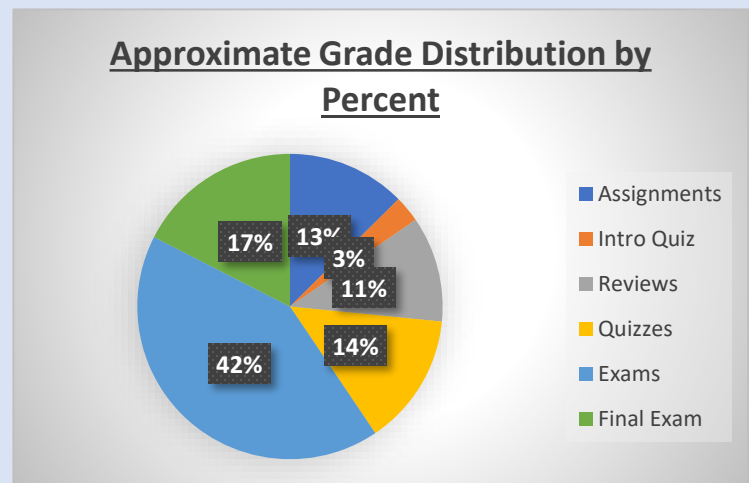
*For Assigning Final Course Grade:*

- Assignments (9) 90 points
- Introduction quiz 20 points
- Reviews (4) 80 points
- Quizzes (4 out of 5) 100 points
- Exams (3) 300 points
- Final Exam 125 points

Participation in discussion topics is optional. A maximum of three postings can be used as extra-credit.

The student's total points will be divided by the total possible points (715) and the grade earned will be based on the following percentage:

<b>A+</b>	<b>100 %</b>	<b>to 99.5%</b>
<b>A</b>	<b>&lt; 99.5 %</b>	<b>to 94.0%</b>
<b>A-</b>	<b>&lt; 94.0 %</b>	<b>to 90.0%</b>
<b>B+</b>	<b>&lt; 90.0 %</b>	<b>to 87.0%</b>
<b>B</b>	<b>&lt; 87.0 %</b>	<b>to 83.0%</b>
<b>B-</b>	<b>&lt; 83.0 %</b>	<b>to 80.0%</b>
<b>C+</b>	<b>&lt; 80.0 %</b>	<b>to 77.0%</b>
<b>C</b>	<b>&lt; 77.0 %</b>	<b>to 73.0%</b>
<b>C-</b>	<b>&lt; 73.0 %</b>	<b>to 70.0%</b>
<b>D</b>	<b>&lt; 70.0 %</b>	<b>to 61.0%</b>
<b>F</b>	<b>&lt; 61.0 %</b>	<b>to 0.0%</b>



# COURSE OUTLINE

\* I reserve the right to make changes to the course outline throughout the semester as necessary.

**See course calendars for specific due dates.**

Week	Week of	Chapter-Topic
1	1-16-23	<u>MODULE 1 – INTRO TO BIOLOGY</u> Introduction to Biology (Ch. 1) • Assignment 1 Due
2	1-23-23	<u>MODULE 2 – CHEMISTRY</u> Chemistry (Ch. 2) • Intro Quiz Due • Quiz 1 Due • Assignment 2 Due
3	1-30-23	<u>MODULE 3 – CELLS</u> Cell Structure and Function (Ch. 3) • Assignment 3 Due
4	2-6-23	Cell Structure and Function (Ch. 3) - continued • Quiz 2 Due • Assignment 4 Due
5	2-13-23	Review 1 • Review 1 Due – Wednesday, Feb. 15 • Exam 1 (Chapters 1-3) Due, Feb. 17
6	2-20-23	How Cells Obtain Energy (Ch. 4) Photosynthesis (Ch. 5) • Assignment 5 Due
7	2-27-23	<u>MODULE 4 GENETICS</u> DNA Structure & Function (Ch. 9) • Quiz 3 Due
8	3-6-23	Review 2 • Review 2 Due – Wednesday, Mar. 8 • Exam 2 (Chapters 4, 5, 9) Due, Mar. 10
9	3-13-23	Fall Break - No Assignments – Enjoy!
10	3-20-23	Cell Reproduction (Ch. 6) • Assignment 6 Due
11	3-27-23	Cellular Basis of Inheritance (Ch. 7) Patterns of Inheritance (Ch. 8) • Quiz 4 Due • Assignment 7 Due
12	4-3-23	Review 3 • Review 3 Due – Wednesday, Apr. 5 • Exam 3 (Chapters 6-8) Friday, Apr. 7
13	4-10-23	<u>MODULE 5 BIODIVERSITY</u> Diversity of Life (Ch. 12) • Assignment 8 Due
14	4-17-23	Diversity of Organisms (Ch. 13-15) • Assignment 9 Due
15	4-24-23	<u>MODULE 6 ECOLOGY AND EVOLUTION</u> Evolution and its Processes (Ch. 11)
16	5-1-23	Population and Community Ecology (Ch. 19) Review 4 • Review 4 Due – Wednesday, May 3 • Quiz 5 Due - Thursday, May 5
17	5-8-23	Wednesday, May 10, 2023: <u>Final Exam Due Before Midnight</u>